

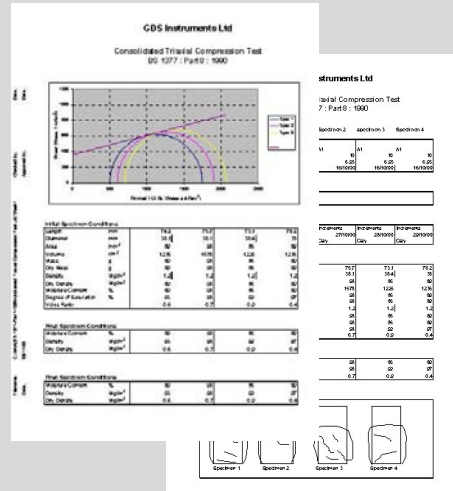
TEST REPORTS OUTPUT IN EXCEL FORMAT TO BRITISH STANDARDS (BS1377:1990):

- Triaxial – UU, CU, CD
- Oedometer
- CBR

Future modules to include:

- Shearbox
- Permeability

GDSLAB REPORTS



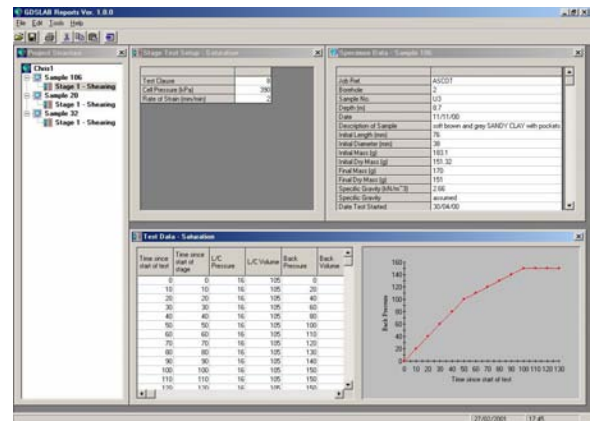
What is it?

GDSLAB REPORTS is a laboratory test results presentation package to National Standards e.g. BS 1377:1990. This program can be used to present data whether saved in a GDSLAB data file, or input by hand. Additionally, it can be used with other manufacturer's dataloggers.

What are its uses?

GDSLAB REPORTS is a program that combines the simplicity of a Windows user interface, with the power of Microsoft Excel. Data obtained using GDSLAB control and data acquisition software (or directly from your logger's software) may be selected, viewed and manipulated where necessary before being exported directly as an Excel spreadsheet.

The GDSLAB REPORTS user interface is designed to manage your test data files as well as provide a means for essential user input procedures such as locating t90.

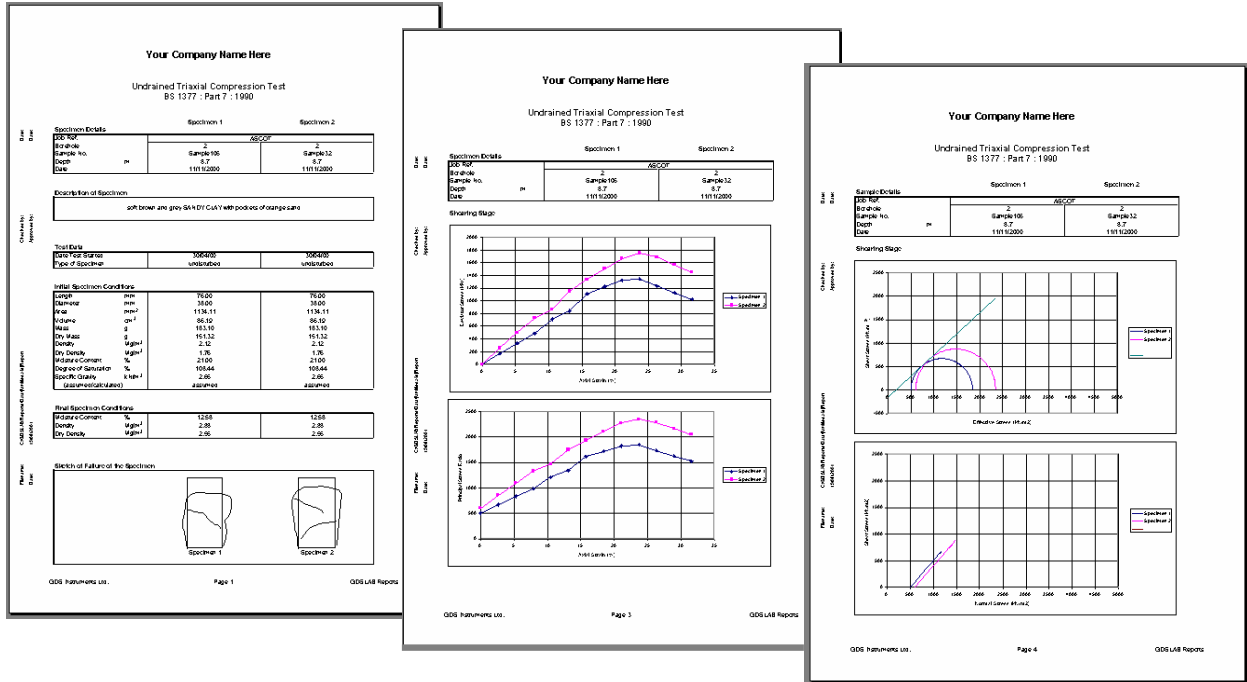


The Excel template spreadsheet created by GDSLAB REPORTS may then be selected for a particular national standard (eg. BS 1377). The template spreadsheet can be customised to a specific company format as required. Excel is widely accepted as the most popular spreadsheet program available today, and as such is seen as a simple interface, that many computer users can already easily manipulate. This also allows your reports to be distributed in electronic format without the need for specific software.

PC Specification

- **Operating System:** Win95, 98, NT, 2000, XP, Vista.
- **Office Suite:** Compatible with Office XP (2002) and above.
- **Hardware:** 233 MHz Pentium or similar, 32 Megabytes Ram (minimum), 64 Mb recommended, CD Rom.
- Microsoft Excel v8 or higher must also be installed on the PC (Office XP needed when using Windows XP)

Example of Reports Output



Why buy GDSLAB Reports?

- Test results automatically generated and output in Excel format, making them easily displayed, easily customised and easy to distribute to clients in electronic format.
- t50, t90 and t100 values calculated graphically.
- Reports can be created from data saved in GDSLAB, data downloaded from a datalogger or data can be manually input directly into GDSLAB Reports.
- GDSLAB Reports is modular so you only need to purchase the modules required for your testing requirements or your International Standard requirements.